

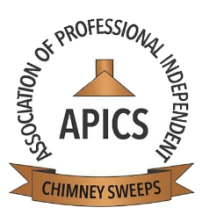
PSN:



# RECOHEAT INSTALLATION MANUAL

FCP 10.7

RECOHEAT – HEATING FROM THE HEART  
Installation instructions for  
Recoheat Heat Recovery Units  
Published July 2025





# Recoheat Installation Manual

## Contents

<b>To the installer .....</b>	<b>1</b>
<b>Introduction .....</b>	<b>2</b>
<b>What's in the box .....</b>	<b>2</b>
<b>Installation .....</b>	<b>2</b>
Before installing .....	2
Attaching the air tube to the Recoheat unit .....	3
Fitting the Recoheat on an existing flue system.....	3
<b>Fitting to the stove .....</b>	<b>3</b>
Lighting the stove for the first time with the Recoheat installed .....	4
Running your stove with a Recoheat .....	4
<b>Siting the air pump .....</b>	<b>4</b>
Considerations for siting the air pump .....	4
Fitting the air pump.....	5
<b>Cleaning and maintenance .....</b>	<b>5</b>
<b>Advice and support .....</b>	<b>6</b>
<b>Returns and refunds.....</b>	<b>6</b>
<b>Contact us .....</b>	<b>6</b>
<b>CE Label .....</b>	<b>7</b>

## To the installer

This Recoheat unit is fabricated to European and British standards BS EN 1856-2:2009.

**The CE / CAUK label is at the back of this manual, which must be retained with the unit to comply with regulations. Copies can be obtained from the website [www.recoheat.co.uk](http://www.recoheat.co.uk)**

**This device must be installed in compliance with Building Regulations, but the work is classed as remedial or maintenance on an existing stove and does not invalidate an existing Building Control Certificate, nor require re-certification.**

Please follow these instructions to ensure the unit is fitted correctly.

For any enquiries or for support with the installation, please telephone us on **01638 445 180** or email us at [sales@recoheat.co.uk](mailto:sales@recoheat.co.uk) quoting the **PSN for your unit** which is written on the front of this document.



## Introduction

Thank you for purchasing your Recoheat Heat Recovery System for solid fuel stoves.

Your Recoheat will significantly increase the effective heat output of your solid fuel stove and will transform the warmth of the area around it. (Please see the website for details.)

The Recoheat unit recovers heat from the hottest part of the stove, just inside the bottom of the chimney, and pumps it into the room.

### Safety Warning

The air expelled from the system is very hot within a distance of about 20 centimetres: do not put anything in front of the air flow within this distance.

Air released from the tube at the front of the flue is heated to around 300°C and maintains that heat for a short distance before it disperses into the room. A standard safety distance from the stove still applies, but you must be aware of this additional area of risk as it occurs above the stove itself.

The Recoheat unit will continue to pump hot air for two or three hours after the stove has gone out, and will produce warm air for six to eight hours on an efficient stove.

**Additional care should therefore be exercised around the stove, particularly when bending down to open the door of the stove for refuelling.**

## What's in the box

The system comprises:

- A Recoheat unit that fits between your stove and the flue
- A length of black high-temperature tubing that connects to the unit
- A length of clear tubing that connects to the silencer
- A silencer that connects to the air pump
- An air pump that connects to a mains or battery-powered electricity source

## Installation

### Before installing

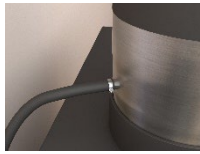
The Recoheat must be joined directly to a single-wall section of flue. This may be a single to twin-wall converter. It cannot be fitted directly to a twin-wall section.

If you have a rigid flue system, please check that you have room for the Recoheat. The additional length of the Recoheat (**80mm for a standard unit**) will mean you have to move or shorten at least one section of flue, in which case you might need to replace a section with a shorter piece.

**The Recoheat requires a straight vertical height of 300mm before the top of any bends in the flue.** If this cannot be achieved from a top-fitting flue, you may consider fitting to the rear of the stove.



## Attaching the air tube to the Recoheat unit



Please note that it is generally easier to attach the black high-temperature tube to the unit before you fit the unit, as it is easier to access.

Push the tube onto the longer nozzle on the back of the Recoheat unit, **with 10mm clearance to the flue**. Do not push it up to the flue wall or it will dry out.

**Safety warning: it is crucial that the air line has clearance from the direct heat of the stove** - it cannot be fitted so that it runs above the stove, or down the stove within 50mm of it. Use 10mm copper pipe to replace the silicone if you are fitting in this configuration, connected to the inlet pipe with a 90° brass compression fitting.

The silicone is rated to 250°C so needs a minimum 50mm distance from the indirect radiant heat to operate safely. Please use 10mm copper if you're in any doubt about this.

## Fitting the Recoheat on an existing flue system

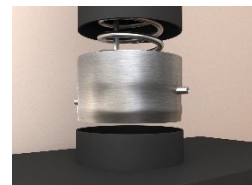
If retro-fitting to an existing stove in situ, you'll need to move and/or shorten the flue to create space to fit the Recoheat.

With a twin-wall flue that is entirely rigid, you may need to exchange at least one section of flue for a shorter piece in order to fit within the existing design.

**You should never force or change the angle of the flue in order to accommodate the Recoheat as this may damage the flue or alter the draw of the chimney.**

## Fitting to the stove

Place the Recoheat unit into the stove collar at the top of the stove where it will fit loosely, then insert the next section of flue pipe into the top, and build and secure the flue as normal.



You can also fit the unit to the rear of the stove using a T piece with soot hatch. Please see the website for details.

Test the chimney draw as usual before sealing the Recoheat. If the draw is insufficient, add height or otherwise adjust the chimney.

Once all tests have been successfully completed, seal the Recoheat joints with rope or fire cement.

### **Safety Warning**

If sufficient draw cannot be achieved with the Recoheat unit in place, remove it and test the chimney without the Recoheat unit in place. If draw is improved, either amend the chimney construction to create additional draw, contact Recoheat, or return the Recoheat system to Recoheat for a full refund.



## Lighting the stove for the first time with the Recoheat installed

The Recoheat must not be used at full temperature until it is 'burned in'. This means you must have a series of at least three small fires, letting the system cool between each one. This will allow the heat-resistant paint and tube to cure and prevent damage. If you are using a new stove for the first time, following the stove burning-in procedure will be sufficient.

## Running your stove with a Recoheat

Follow standard best practice when running your stove with a Recoheat. This means:

- Only burn approved fuels including wood with a moisture content below 20%.
- Build a good fire with plenty of fuel before you light it, to ensure it will clear cold air from the flue when it starts, and burn cleanly from the outset.
- Switch on the air pump soon after the fire is lit, but after allowing the coil to heat: it will begin pumping hot air in about 30 seconds.
- Maintain a heat of between 150°C and 250°C in the stove to ensure it is burning cleanly.
- Once the stove itself is hot, you can reduce the amount of fuel so that the optimum temperature is maintained but the stove is damped down to the minimum burn rate. The Recoheat will ensure the stove is producing significantly more heat than you'll achieve without it.
- You can let the stove die out at least two hours earlier than you would normally and just leave the pump running: hot air will continue to pump for hours after this point, replacing the heat normally provided by refuelling.

Fitting a timer to the air pump will allow you to leave your pump on and leave it so that warm air continues to circulate. Depending on the size and efficiency of your stove, this can be effective for at least 8 hours. Neither the standard pump nor the unit will suffer if you leave the pump running as they are designed for continuous operation, and the process costs very little because the standard pump only consumes 17 watts in operation.

## Siting the air pump

### Safety

- The air pump does not extract air from the room, so may be used in a room with a combusting stove.
- The air from the pump does not combine with exhaust gases from the stove flue, so does not pose any risk from fumes.
- The air pump should not be sited within the direct radiant heat of the stove.
- The air pump may be sited outside as it is waterproof.
- The electrical supply to the air pump must be protected from heat and water.

## Considerations for siting the air pump

The air pump is chunky and not at all silent, so needs to be sited where you can't hear it. This can be up to 15 metres or so away, and it can be placed outside or on a different level to the stove.

If you can't take the pump out of the area, placing it in an enclosure such as a cardboard box, cupboard or wood storage unit works well, as long as there is a plentiful supply of air to the pump. Do not put it on a wooden shelf because it will then resonate.



The air will be pumped around the room, so you should ensure it is as clean as possible. There is a filter on the pump which should be checked and cleaned regularly.

The air pump can be placed outside as it is waterproof, but you will require easy access to the electrical supply switch to activate it conveniently.

### Fitting the air pump

The air pump just needs to be connected to the clear tube via the silencer.

The silicone tube, **1**, or black rubber connector (depending on your pump type) attaches to the brass nozzle on the silencer to connect it to the air outlet on the pump.

The clear air tube then attaches to the short white outlet, **2**, and connects via the black tube to the Recoheat.



### Cleaning and maintenance

Your Recoheat will need cleaning in line with your regular chimney maintenance routine, but please note that it may increase the retention of soot within the chimney, and necessitate more regular cleaning, therefore.

You are advised to have your chimney checked and cleaned within six months of commissioning, and that you follow your qualified chimney sweep's guidance on the period between sweeping the chimney, which will depend on your usage and the many variables that impact on your flue's performance.

Your Recoheat coil has a 65mm gap to allow the flue to be brushed through it using traditional brushes. Standard professional rotary brushes require a 25mm gap and are the easiest way to sweep. Brushes with a larger central boss than 50mm will not pass through the coil, and you will need to by-pass the Recoheat unit in order to clean the chimney.

If you have a rigid flue that is difficult to disassemble to remove the Recoheat to access the chimney, there are two options to make regular maintenance easier:

- You can add a hatch that can be removed to give access to the flue. This should be fitted above the Recoheat.



- You can purchase a Recoheat in an adjustable flue section. Please see the website for details. In this instance, the adjustable section can be loosened, lifted, and removed to give access to the flue length and to the Recoheat below.

## Advice and support

For advice and support on installing and maintenance, please phone us on 01638 445 180, email us at [sales@recoheat.co.uk](mailto:sales@recoheat.co.uk) or check our website at [www.recoheat.co.uk](http://www.recoheat.co.uk).

We post regular updates on our channel at [www.youtube.com/recoheat](http://www.youtube.com/recoheat)

## Returns and refunds

If you find that your Recoheat does not work with your stove or flue set-up, please simply remove and return it to us for a full refund. While the device provides enormous benefits and efficiencies, it cannot overcome deficiencies with draw caused by chimney design or siting and should not in any circumstances be used if your chimney does not have sufficient draw to be safe.

**If you encounter problems, please contact us for help, but if in doubt – take it out!**

## Contact us

You can get help and advice through our website at [www.recoheat.co.uk](http://www.recoheat.co.uk)

Email us at [sales@recoheat.co.uk](mailto:sales@recoheat.co.uk)

Phone us on **01638 445 180**

Write to us at:

Recoheat  
79 Hills Road  
Cambridge  
CB2 1PG



**Recoheat Ltd are a member of the Stove Industry Association and are approved by the UK's leading Chimney Sweep associations**



## CE Label

<b>CE UK CA</b>
<b>Recoheat Ltd, 79 Hills Road, Cambridge CB2 1PG</b>
<b>20</b>
<b>EN 1856-2:2009</b>
<b>Metal rigid connecting flue pipe with fixed metal rigid coil insert</b>
<b>T450 – N1 – D – Vm – L 40100 – G (16) M or G (16) NM</b>
<b>Nominal size:</b> 280mm height x 125mm width 280mm height x 130mm width 280mm height x 150mm width 280mm height x 180mm width 280mm height x 200mm width
<b>Compressive strength</b>
<b>Maximum load:</b> equivalent to 3m of flue liner
<b>Flexural strength</b>
<b>Tensile strength:</b> Maximum load of the flue liner suspended: equivalent to 2m
<b>Non vertical installations:</b> Yes
<b>Thermal shock resistance:</b> Yes
<b>Coefficient of flow resistance</b>
<b>Mean roughness:</b> 0,5mm
<b>Freeze thaw:</b> Yes



**Recoheat**  
stove heat pump  
more heat – less fuel

[www.recoheat.co.uk](http://www.recoheat.co.uk)

